

medisun[®] HF-216

PROFESSIONAL PHOTOTHERAPY OF THE HANDS AND FEET



Effective treatment
of hand and foot eczema,
psoriasis and vitiligo

Distributed in the UK by

ATHRODAX
HEALTHCARE INTERNATIONAL LTD

medisun® HF-216

EFFECTIVE THERAPY OF HAND AND FOOT ECZEMA

The medisun® HF-216 permits targeted treatment of the palms, backs of the hands, backs of the feet and foot soles. Treatment is performed comfortably while sitting.

HIGHLIGHTS:

- Targeted treatment of the hands and feet at the same time
- 2 or 4 lamp modules
- (P)UVA- or UVB₃₁₁-range
- Touch-PC or microcontroller with input in J/cm²
- Medisoft therapy management software (optional)
- Automatic switch-off at the end of the exposure time
- Programmable dosage limits
- Integrated operating hours counter
- Professional type design with 8 or 16 high-performance lamps
- Acrylic protection panels
- Optimal homogeneity through highly-specular reflector to increase the intensity amplification
- Ergonomic module positions
- Sturdy metal casing with plastic coating
- Mobile stand equipped with brake wheels
- Low heat development
- Patient UV-protection goggles included



Microcontroller with LC-display



WITH 2 LAMP MODULES AND MICROCONTROLLER:



Mobile stand with
stable brake wheels



WITH 4 LAMP MODULES AND TOUCH PC CONTROL:



Targeted simultaneous
Treatment of the hands and feet
from top and bottom side



Product video
www.medisun.de/en

medisun® HF-216

SHORT EXPOSURE TIMES

The high UV intensity of the medisun high-performance lamps ensure short exposure times.

Patient UV protective goggles are included in the scope of delivery.




INDICATIONS

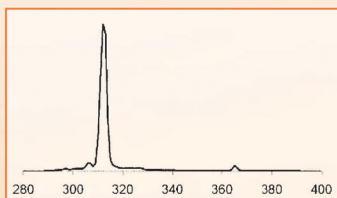
- Psoriasis
- Atopic dermatosis
- Vitiligo
- PUVA therapy / Balneo phototherapy
- Polymorphous light dermatosis (PLD)
- and other skin diseases

ORDER DATA

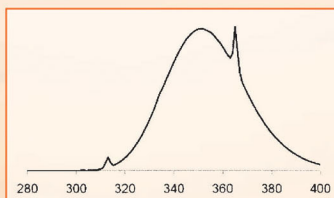
	Item no. HF-216 (2 modules)	Item no. HF-216 (4 modules)
TYPE:		
(P)UVA	3843	2017
UVB₃₁₁	3844	2018
OPTIONALLY:	Technical specifications of PC controlled versions available on request	
TOUCH-PC-CONTROL		

TECHNICAL DATA

	HF-216 (2 modules)	HF-216 (4 modules)
		
DIMENSIONS	L 80 x W 72 x H 100 cm	L 80 x W 72 x H 100 cm
OUTPUT max.	400 W	800 W
WEIGHT	55 Kg	70 Kg
POWER SUPPLY	230 V / 50 Hz	230 V / 50 Hz
UV LAMPS	8 x 36 W	16 x 36 W
UV RANGE:		
UVA	315 – 400 nm	
UVB₃₁₁	310 – 315 nm	
VERSIONS	(P)UVA- oder UVB ₃₁₁ -	
CERTIFICATION	CE 0197	
WEEE-REG.-NO.	DE 91065138	



UVB₃₁₁



UVA

Technical changes reserved.